

M-469

HALE NAUA

Genealogical Album

ALBUM



E. G. B.
\$2.00

Ka imua o Ka Luan Koa ma Ke ana Botania he Casuarina Eguttiti folia.

KALAKAUA I.

Keohokalole w | Kapaakea k
Kamae w (See page) | Aikanaka k (See page 3) Kamokuiki w | Kamanawa k
Keohihiwa w | Kepookalani | Alapaiwahine | Kepookalani (See page 4)
Ululani w | Keaweahenu (See page 6) | Kaolaniailii (naha) | Ka-I-Amamao
Moku, † King of Hilo (See Moku page 2) | Papaikaniau II. | (Kapahiaahu w | Ka-I-Amamao | Lonomaikanaka | Keawe the Great (Kelahehaleiokamotu.))
Kalani Kueiwalono | Kuimeheua | Kaouiokalani | Ahu-a-I | Piilani wahine | Ahu-a-I | Keakealaniwā Kanaloaikaiwilawa (See page)

Kamokoleakuikeakaha w | Mahikapalena | Kuthibewaika-luapalaloakalani | Umi-a-Liloa | Makakuuwahine | Kalanikaumakaowakea
Kamolanui-a-Umi (Umi's 3rd wife.) | Henahena | Kaweliamakalae | Makalae
Kahekilinuialokapu | Umi | Oweakalanikauwaha | Kalanamoewaiku
Keawenui-a-Umi | Kapukini (Umi's 4th wife See below.) | Umi
Peleioholani k | Kualii k | Kauakahiakahoowaha | Kahoowaha
Lonokahikini w | Kalanikahimakahialii | Mahulua | Kawelolauhuki
Kauhiakamalalawalu | Kamalalawalu | Kihapiilani* | Kihapiilani*
Kapukini | Piilaniwahine | Kumaka w | Kumaka w
Makakaualii (See page 5) | Hoomoeahaumia | Uao k
Kaokukilani w | Kauhukio Kalani w | Keliokaloa k | Umi (K)
Kuhailani (K) | Ha-o-Luanuu w | Kapukini w (See above)
(Kawelokalani) | (The ink cross of the Brother and the sister is called pira)
Kanelaaokahi | Kihāaulani | Aulani | Kane
Kumaka | Kauhia Kalohelani | Kahekiliano-waiku | Pahua
Kauaupena | Kauakahiakuihewa | Kaak aulani w | Kauhiiulapiilani
Kawelokalani | Kapunawahine | Kakuihewa k | Laninuihaahaikupee
Moihala | (See below and see continuation above)
Piimaohulani |
Moihala | Kalakauaehuakama-lalawalu | Kamalalawalu | Kihapiilani
Piimaohulani | Kuuakalani | Piilaniwahine | (See above)

† Kuimeheua, King of Maui
‡ Papaikaniau * (sister) of -
‡ Uluhehu † younger brother
* This woman is the Ancestor of the Kings of Maui See page.
† Late M. Kekuanoa's Ancestor.
† King of Maui and contemporaries of King Lonoikamakahiki of Hawaii, and Kakuihewa, King of Oahu.

From this King belongs the Kapu Waha of the Present reigning Family through the Maui line of Kings. and from Umi the same Name was bestowed upon him by Liloa

+ Kamehameha I's second Queen, from which spring the late Royal families N. I. III. Kii, Kip Kii, Kapehu, Sigard King of Maui for a short period. His son Kamehameha also reigned for a short period by was defeated by Kamehameha I.

+ Half brother of Kamehameha I, mother of Kalanipoua King of Hawaii.

Kalakahalo (W)

Kapahala (W)

Alihanaka (W)

Kapohaha (W)

Kapa-o-i-a-hu-a-hu (W)

Kamalo (W)

Umu-kakama-nu-u (W)

Umu-kakama-nu-u (W)

Umu-kakama-nu-u (W)

Kamehameha I's Family

Lonoikahalepu (W)

Kamehameha I (W)

Kamehameha II (W)

Kamehameha III (W)

Kamehameha IV (W)

Kamehameha V (W)

Kamehameha VI (W)

Kamehameha VII (W)

Kamehameha VIII (W)

Kamehameha IX (W)

Kamehameha X (W)

Kamehameha XI (W)

Kamehameha XII (W)

Kamehameha XIII (W)

Kamehameha XIV (W)

Kamehameha XV (W)

Kamehameha XVI (W)

Kamehameha XVII (W)

Kamehameha XVIII (W)

Kamehameha XIX (W)

Kamehameha XX (W)

Kamehameha XXI (W)

Kamehameha XXII (W)

Umi (W)

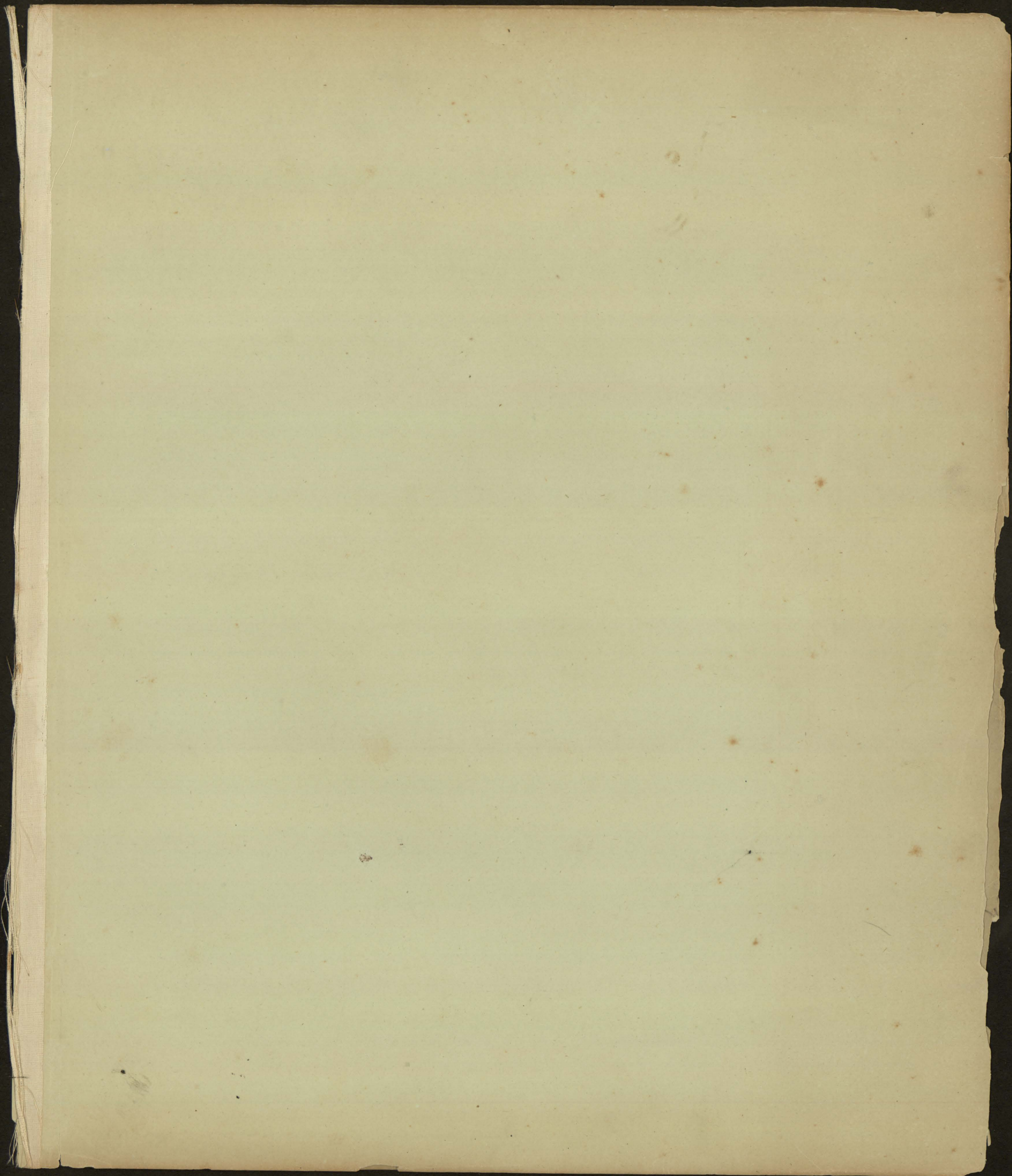
Kamehameha I (W)

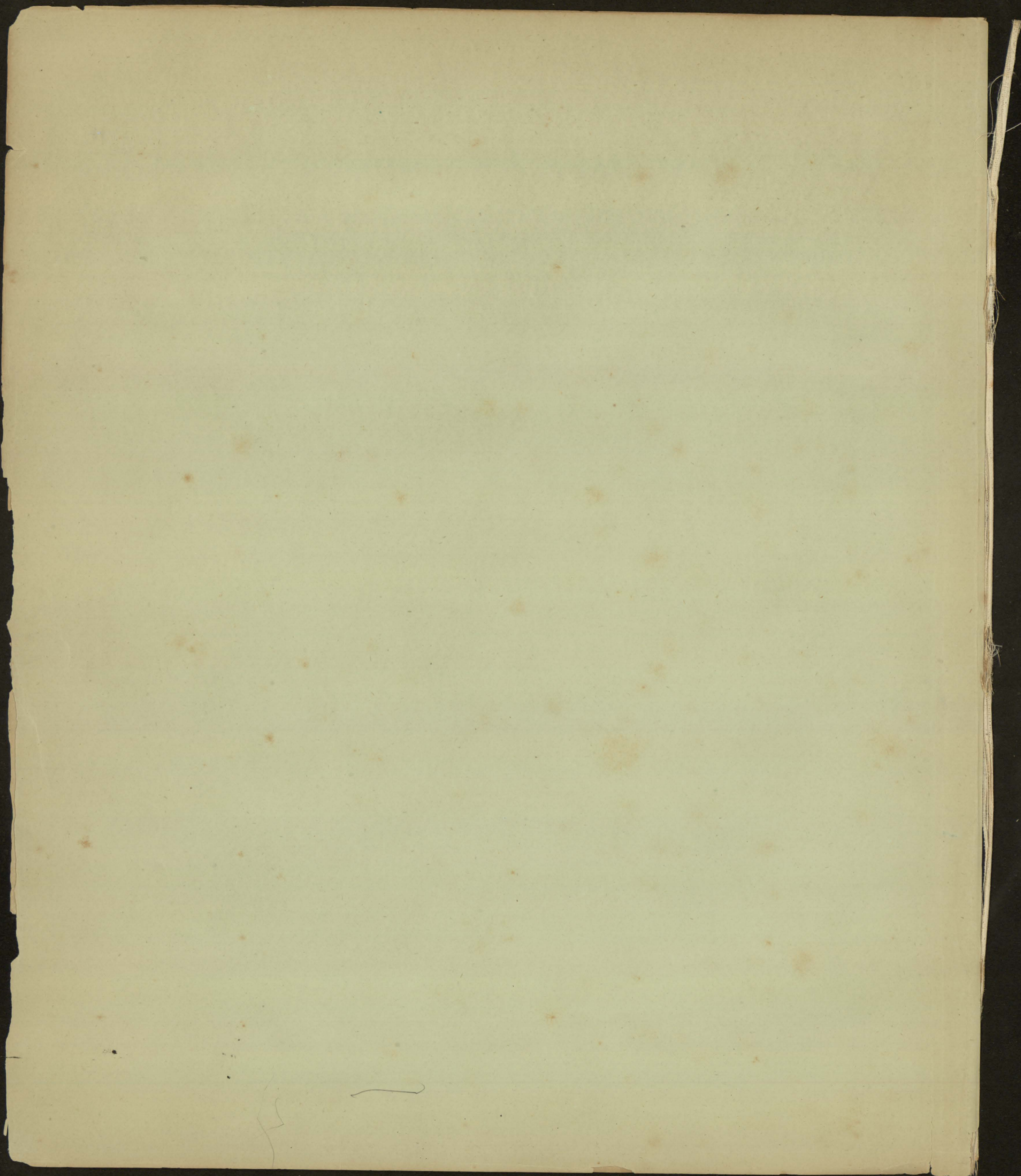
Kamehameha II (W)

Kamehameha III (W)

Kamehameha IV (W)

* Kamehameha I's two Elder brothers were 1st Kamehameha, 2nd Kamehameha, and 3rd Kamehameha; the two latter sons were twins. To Kamehameha I was wrongly attributed the Massacre of the tender Lady Eleanor.





LILoa (k) | AKAHIAKULEANA (w)

Umi k | Kulamea w, (1st wife)

Kapunahanuanuailemi | Kauo

Kane-a-Kauo | Kawahineokalani Hiiakaakauo

Akahiwalaloa w | Keaweanapua k

Ma | Iwikaualii

Leoha | Maloleiauiwi

Ia-Ma | Kahoowaha-a-Paukei

Umiiwiula w | Piena k

Kumaiku w | Keawepoepoe k

Kanekopolei | Kalaniopuu

Keeumoku 2d | Namahana

Alapai k† | Kamokuiki

Kaulunae

Kaoleioku* | Kekupuapa

Kaahumanu, Kaheiheimalie* K L

Kekahili w | Piikoi

Family extinct 1878

Pauahi | Kekuanaoa

Kinau w | Kekuanaoa

D Kahalepouli | Kekaulike, (Governess of Hawaii)

H R H Princess Keelikolani, Extinct

Kamehameha IV and Kamehameha V

H H Prince D Kawanakoa, (St Mathew's, San Mateo)

Extinct 1863-1872

" " Ed Keliiahonui

Kaoleioku* | Luahine

" " C Kalaniana'ole

Konia | Paki

*Kaheiheimalie | Kalaimamahu

Hon Mrs Bishop, Extinct 1884

Kekauluohi | Kanaina

Lunalilo

Extinct 1874

† Surnamed Alapai-Maloiki; or Alapai Kupalumano.

Umi k | Mokuahualeiakea w (5th wife)
 Akahiilikapu | Kahakumakalina

Kapulani Keawenui-a-Umi k | Koihalawai w and Kiliiohiohi w
 Kanaloakuaana k | Kaikilani

Keaweokai k (2nd husband) | Keliokalani w, Keakealani k, brother and sister, pi'o
 Kalani-o-Umi w | Umikukailani

Kanaloauoo k Keakamahana w (2nd wife) | Iwikauikaua k
 Keakealani w | Kanaloaikaiwilewa k
 Keawe, (see below) Kekuiapoia w | Keeaumoku k Kekelaokalani

w/a/
 Kapukiniakaa | Iwikauikaua k | Kauakahikuaanaauakane (2nd wife)
 Kaenakahauoku Kaneikauaiwilani w | Keakealani k
 Kalanikauleleieie w

Keawepopo - Kanoena
 Kameciamoku - Kamatacheikuli
 Kepookalani - Keohohiwa
 Aikanaka - Kamae
 Keohokalole - Kapaakea
 Kalakaua.

Umi k | Piikea w (6th wife)
 Aihakoko k and Kumalae k | Kumunui puawalu
 Makua k | Kapohelemai
 I | Kualu

w/
 Ahu-a-I-Kaohiokalani Ahu-a-I | Piilani w
 Lonomaikanaka | Keawe k

Kapaihiaahukane I
 Ka-I-amamao | Kapaihi-a-Ahu w*
 Kaolani w | Ka-I-amamao (see page 4)
 Alapai w | Kepookalani
 Kamanawa | Kamokuiki
 Kapaakea | Keohokalole
 KALAKAUA

Kapaihi-a-Ahu k | Umiulaikaahumanu
 Heulu | Ikuana
 Keaweheulu | Ululani
 Keohohiwa | Kepookalani
 Aikanaka | Kamae
 Keohokalole | Kapaakea
 KALAKAUA

Umi k | Mokuahuleiakea (5th wife)
 Akahiilikapu | Kahakumakalina

Keawenui-a-Umi k | Koihalawai

Kanaloakuaana | Kaikilani
 Kalani-o-Umi | Umi-Kukailani
 (Sister of Keakealani k)

Kanaloaikaiwilewa | Keakealani w (see page 3)
 Keawe k | Lonomaikanaka (1st wife)
 Ka-I-amamao | Kaolanialii
 Alapai w | Kepookalani
 Kamanawa | Kamokuiki
 Kapaakea | Keohokalole

H M Kalakaua, H R H Liliuokalani H late R H Likelike | A S Cleghorn
 H R H Princess Kaiulani

Kahiki Kalaokalani

Keoua | ~~Nahoua~~
Kalokuokamaile | Kaloiookalani

Kalokuokamaile w | Kalaihalani

Kaohela w | Nuhi k

{Kekaikuihala w

{Laanui k | Owana

{Kekaaniauokalani Pratt

{Kailipalaki | Kamai

Teresa Kaohela | A J Cartwright

Napulanaoookalani, Kuailanimamao

Hakukai w | Manoha k

Keoua k | Pualinui w

Luluhiwalani | Kalola

Kahekili. *Extinct.*

Keoua k | Akahi

Kalaiuwahi | Kailipakalua

Pauehua | Kaluai

Akahi w. *Extinct.*

Keawe k | Lonomaikanaka (1st wife)

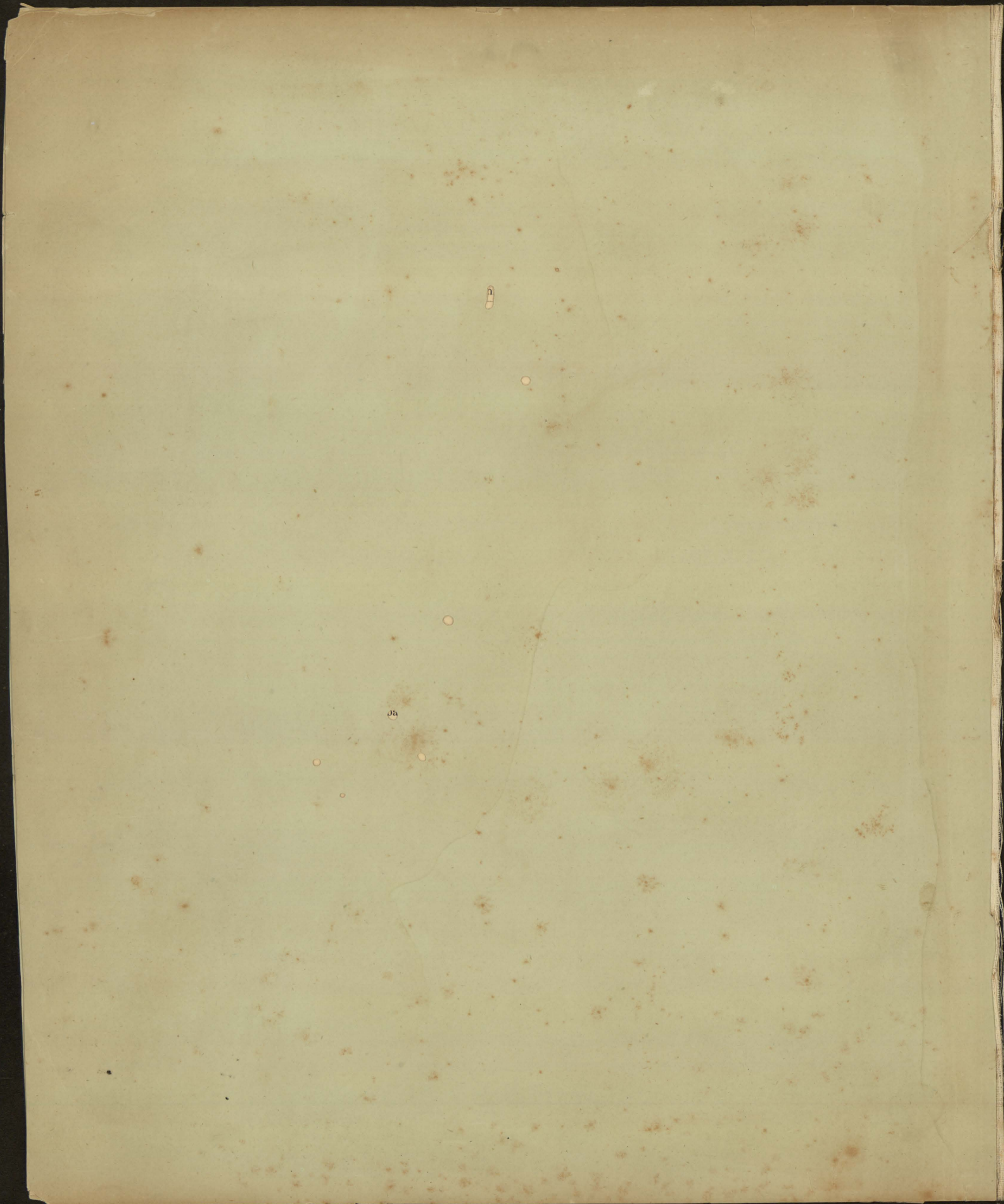
Ka-I-amamao | Kaolanialii

Alapai w | Kepookalani

Kamanawa | Kamokuiki

Kapaakea | Keohokalole

H M Kakaau, H R H Liliuokalani, H late R H Likelike | A S Cleghorn
H R H Princess Kaiulani



Ke Kuaikau o Kāihona o na Lāhui Kanaka ma ka Pūnana Hema.

Poaiamu

Maikoniā - Borebe. - Aulekeleona - Hawaii - Inia Malasia - Aferica por
 Mariorio. - Patagonia - O Wakaax Papa w - Hova - Keli-kili.
 Papua - Iairana - Humuhonua - Malenia - Kōkonekoko
 Kambiniuona - Aulana Kanakao - Kihā - Wahine - Kimepania - Ke Holilo
 Kanakalēle.
 Anthropoidea
 O Kanaka ia Waiololi.
 (Kāpōkano Kano - Kāpōulūli.)
 Keopeapea - Kailēakikoko.

50°

Kama - a - Puna - Kailio lohe lohe - Kuilioloa - Puahiuwa.
 O Kahalemoa - Motomoho - Kaulahim - Ka Lawa - Pimanui ai Kōae
 O Paeohulunui - Kaalaeunahina - O Kēlele -
 Ke Kōae hulemae ma - O Kēwaha - Ka Neeneeloto - Kuakini.

150°
160°

O Honuapakai - Honu - alo - Kua - O Kamoo Kua Kalakala
 O Ka Moa Kaulakalanipēa -
 Ka Moa - Nihi Kiamoku
 O Pimoz - O Ahumakaitai.
 Ka Ia - Kiamoku - O Moano - Mui - Kaleku.
 O Ke a hole - lae - Panuki.
 O Kaulae niho - waka - waka
 Ka Mui - Ka puhi palahimā

170°

O mooriananea - Kamoo Kōlohonua - Kamoo Kaula.
 O Kumumuokea - Puhikuapae - Kēkapa - Kōlohonua - Kāpūhimōroa.
 O Naka - O Loli - O Kailopui - honua.
 Olohelohe - Ulapopa - O Ohiki makāla - O Ohiki amōana - O pae Niho - Kēke.
 O Pēhē - O Urauna - O Akaka - Kalepe - Kūalakai - Opēhi - Papana - Pēpi.

180°

Ka - Uku - a Kōa - Kōa.
 Ka - Pūhāi - Mahae.
 (Ke Kumu - Ola.)

190°

Paa - Kahonua - Lani.
 Ka - Kaku Kānōkano honua
 (Kekū - ia.)
 Ke Ahi - apo - Lani - honua.
 (Ke Kākaha)

200°
240°
522°

Kahalokowaiapohoua
 (Ka hua - ia.)

776,090,522

Ka - Apōno - Kili - a - Kēkulani - (Hana o Lonomuku
 oia ka Mahina.)

156,000,000,000

Kailo Kōkūhioweloka.
 (Ka ahi.)

94,481,000,000,000

Ka La.
 (Kamakua)

80,712,800,000,000,000,000,000

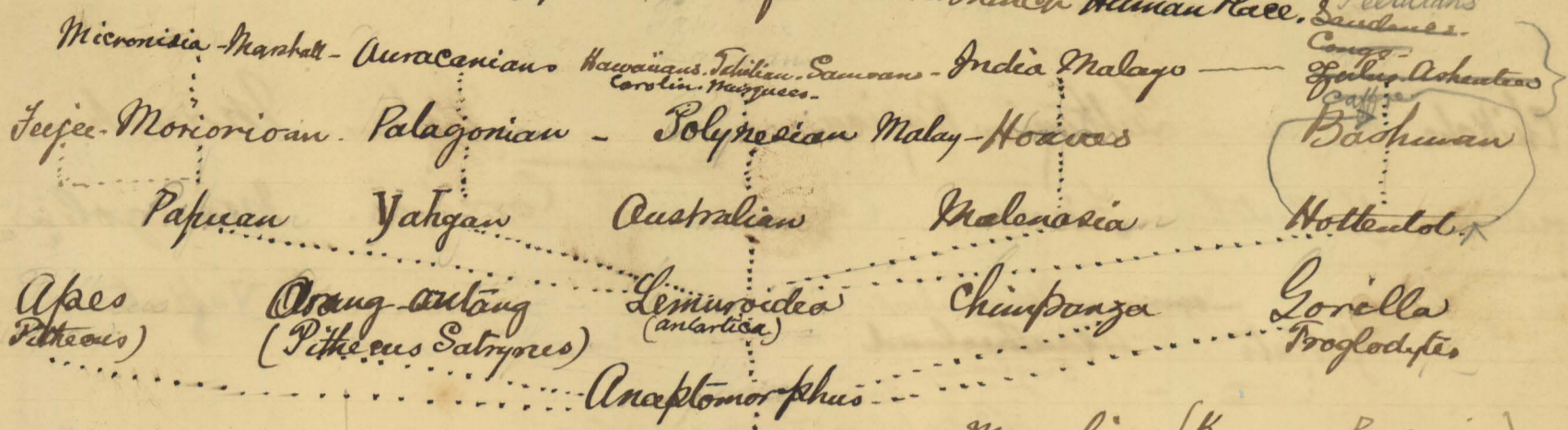
Kiliēua } Kēkumulipo hōi.
 Kēkupuna }

Pov - Pama Kaulua -
 Poo - Kūhaopanis - Kōwāiki.
 Kawaapōlaole.
 Pōka - i -
 Kalamu wahine.
 Kāmōhama.
 Kamohama.

1,382,895,000,611,212.

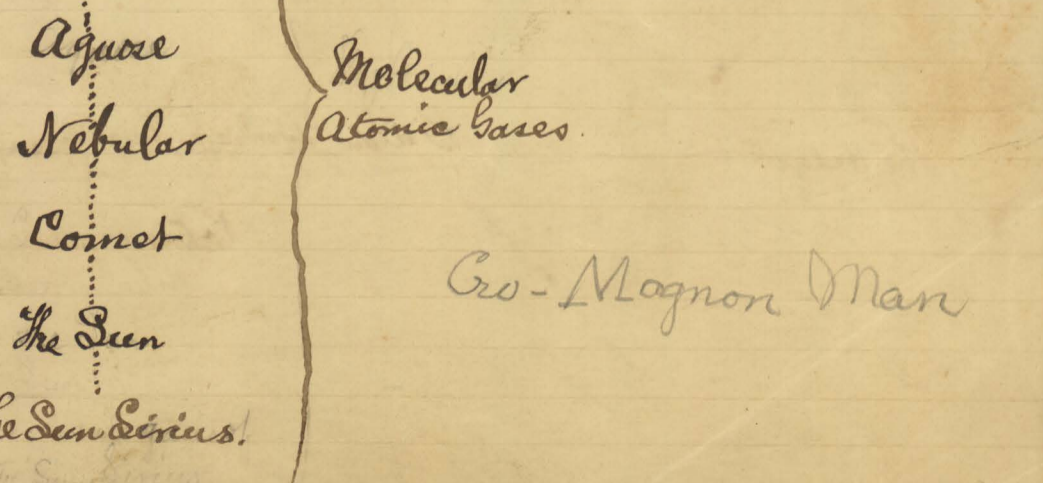
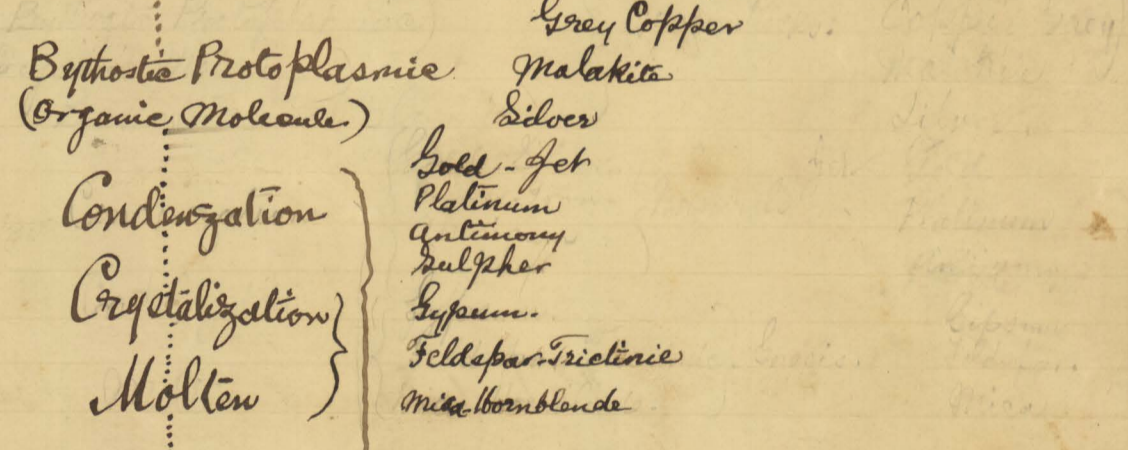
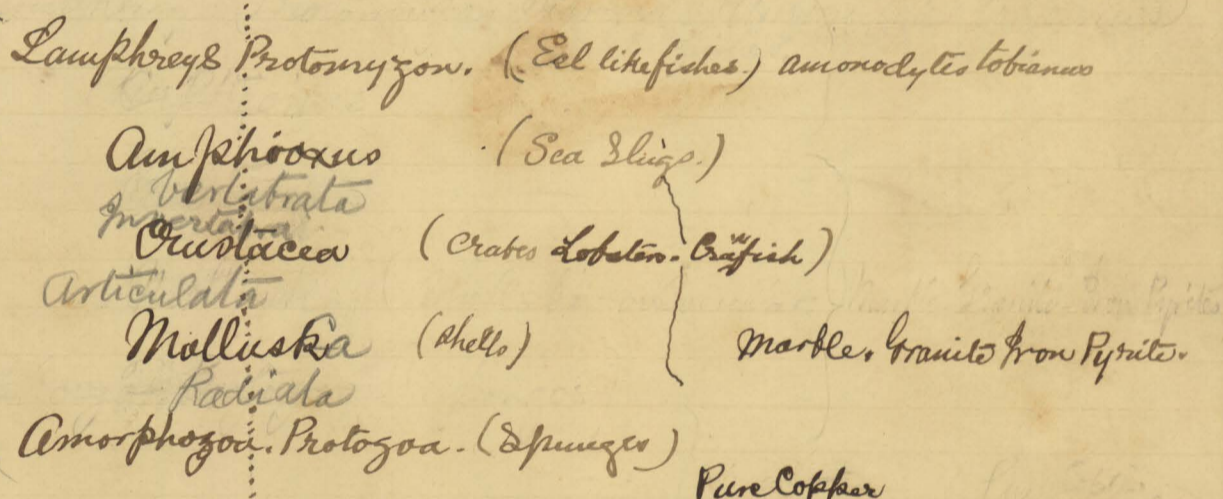
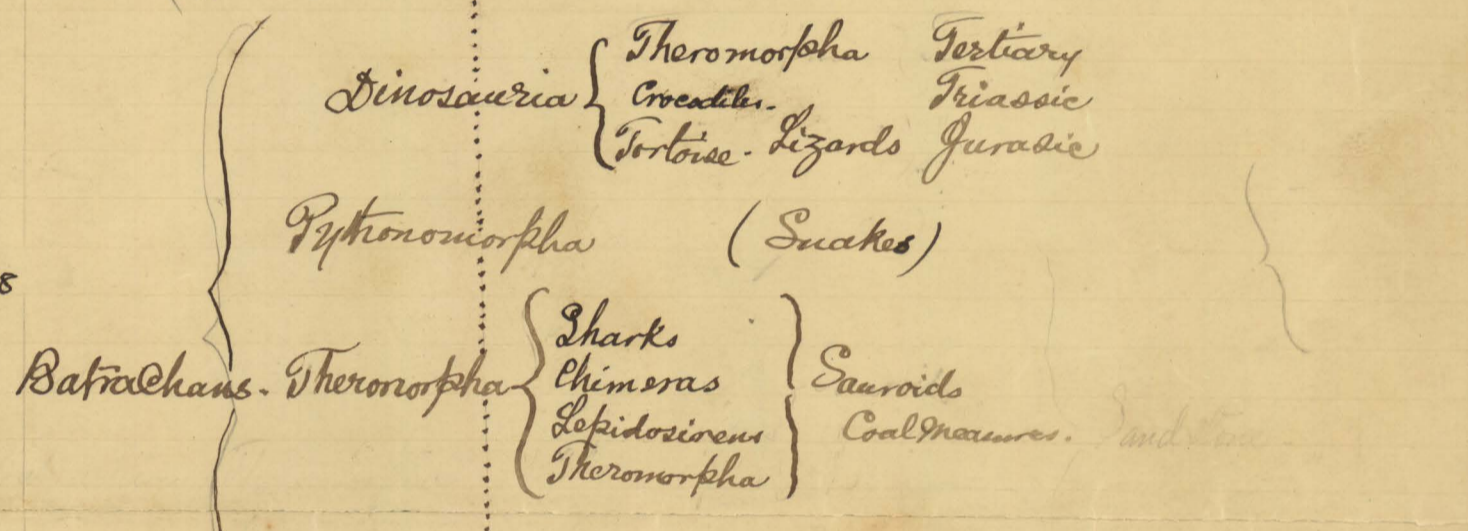
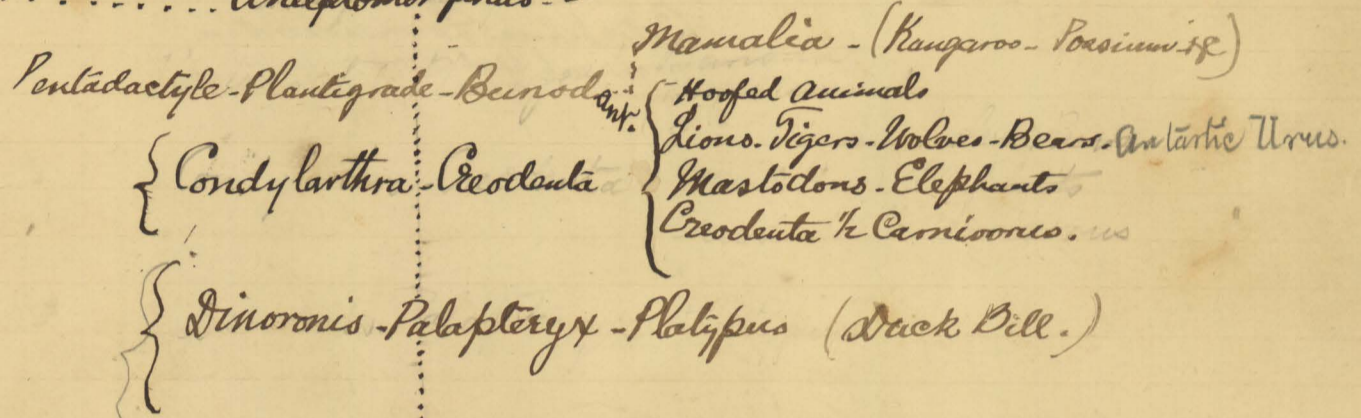
Genealogic Descent of Southern Branch Human Race.

1,382,895,000 611,212.



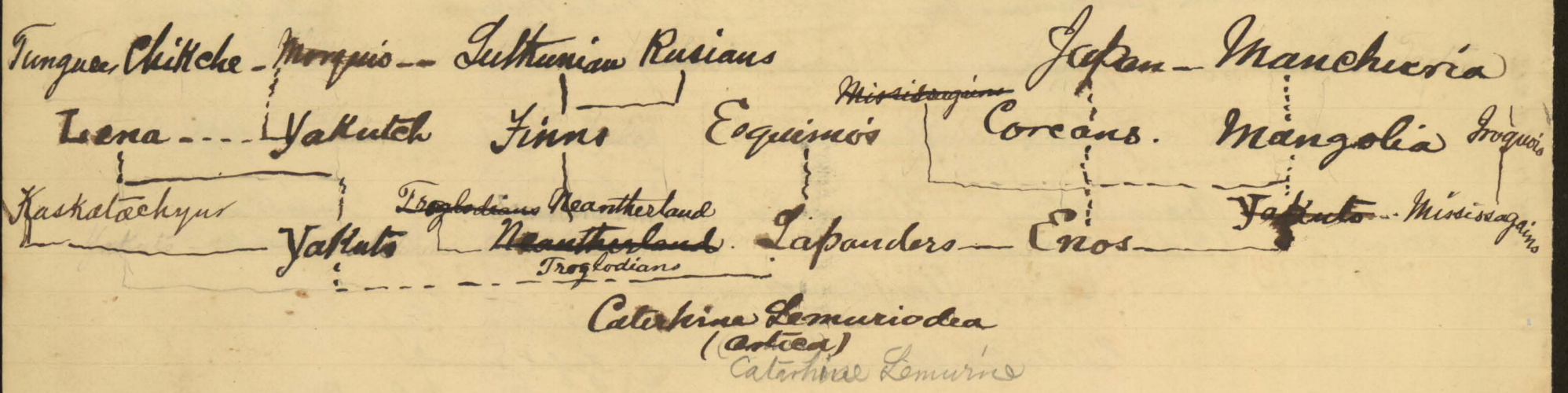
30°
150°
160°
170°
80°
190°
200°
240°
522°
000°
522°
000°
000°

1 252.773 349.735 160
1 100.006 215.031 422
322.705 340.553 185
264 176.861 001.924
39.200.456 323 100
384 27.425 436 240
38.042.638.856 340
23.724.924.750.000
20.825 000.000.000
110.472.728.462.350
6.240 400.026.000
4.329 522.992.110
1.515 049.910.203.126 000 000

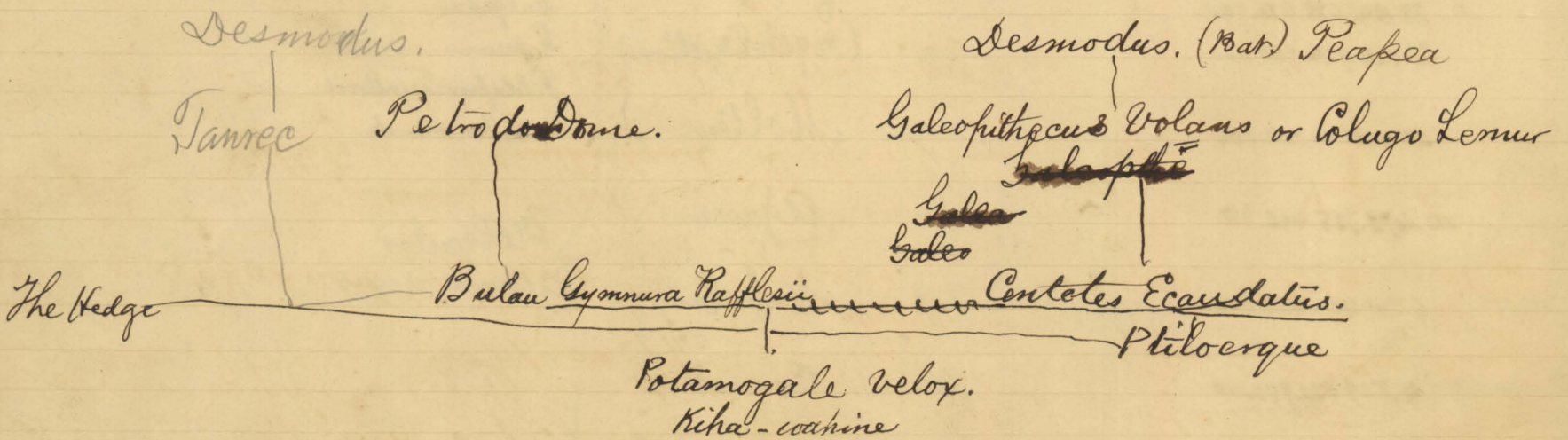


Co-Magnon Man

Genealogical Descent of the Northern Branch of the Human Race



Dinotherium - Miocene epoch



Umi k | Henahena w (3rd wife)

Kamolanui-a-Umi

Umi k | Kapukini w (4th wife)

Haoluanui (2nd wife) | Keliokaloa k | Makuahineopala (1st wife) *Ka*

Kaohukiokalani w, (pi'o) | Kukailani k

Kaikilani w (see Kanaloa &c.)

Makakaulii k | Kapukamola w (1st wife)

Iwikauikaua k | Keakamahana

Keakealani w

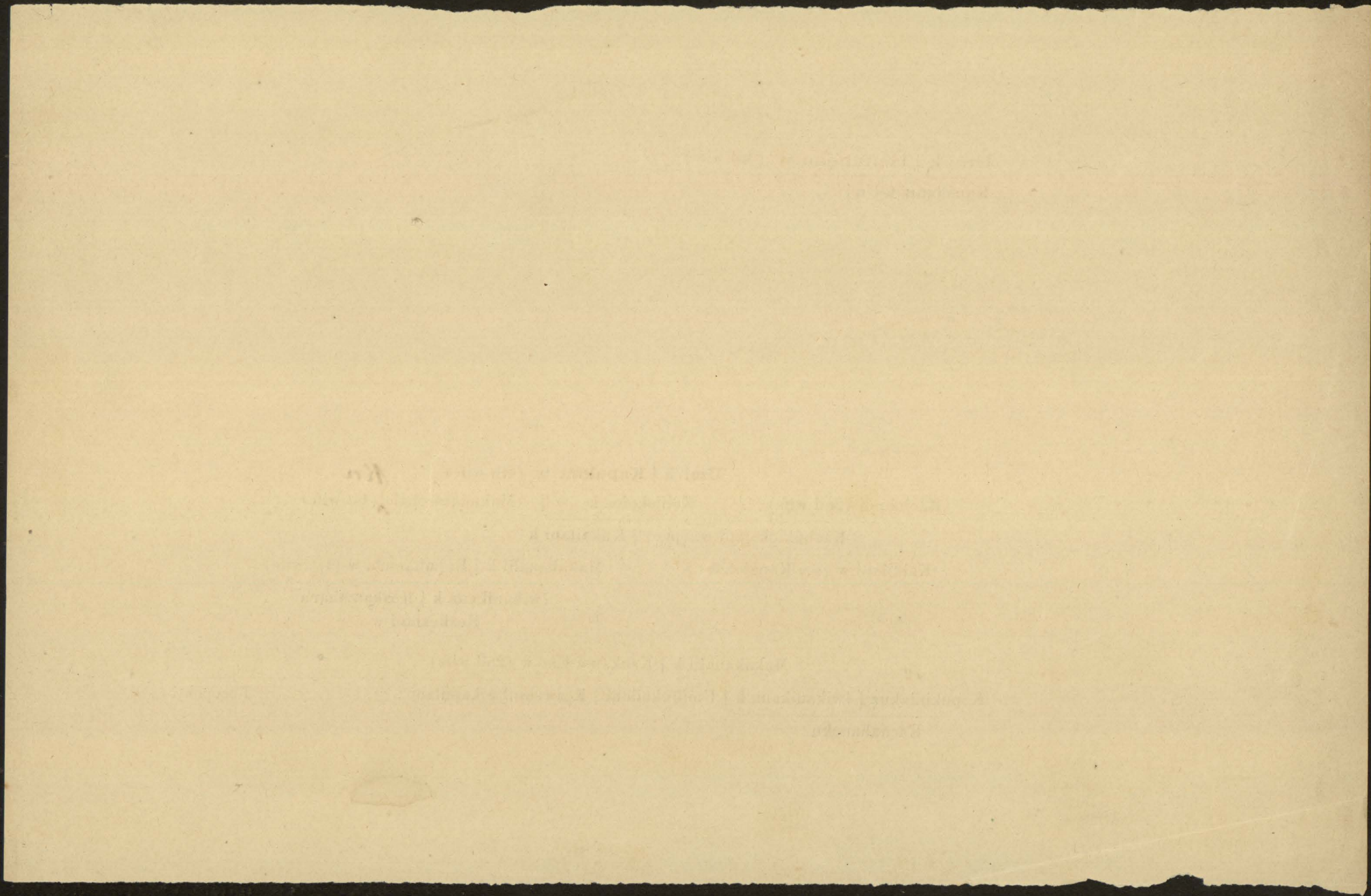
107
Makakaulii k | Kaakau-a-Uao w (2nd wife)

Kapukiniakua | Iwikauikaua k | Umikukailani | Keawenuhookapulani

Pueopokii

Kaenahauoku

i/



Man at 154 pound weight.
His Chemical Composition

1. Oxygen = 97 pounds. Volume Ordinary Temperature 980 Cubic feet.
 2. Hydrogen = 15 " " in free " 2800 " "
 3. Nitrogen 4 "
 4. Chlorine 26 ounces
 5. Fluorine 3 1/4 "

Solids

6. Carbon 48 "
 7. Phosphorus 26 ounces
 8. Sulphur 3 1/4 "

Metals

- 9 Calcium 3.05 "
 10 Potassium 2 1/2 ounces
 11 Sodium 2 1/4 "
 12 Iron 1 1/4 "

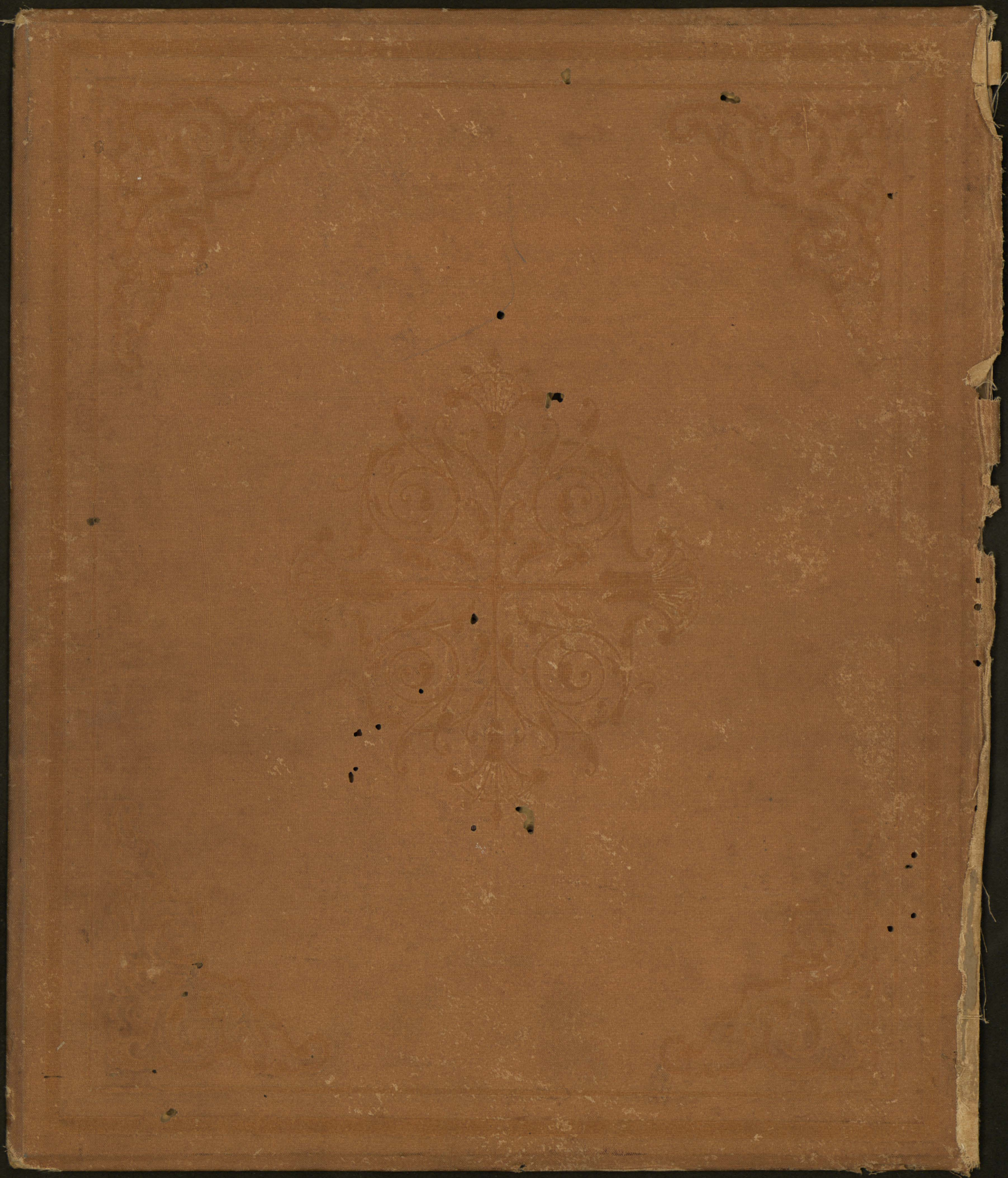
169.05 116 1/2
 31.95 1.4 1/2
 200.00

Recipe

Carbolic Acid in Small Pox.
(prescription)

15 to 30 grains (daily?) in about eight fluid ounces
 of water, for Adults.
 10 to 20 " " in about four fluid ounces
 of water, for Young People,
 according to the age.

After the fever have subsided, opiates may be ad-
 ministered to quiet nervous manifestations.



Family Potamogetonid Genus Potamogeton + Scirpus vulgaris.